



UNIVERGE® Terminal MH250 In-building Telephone

Fulfilling the promise of UNIVERGE®360

At a Glance

- Integrated phone book
- Speed dial lists
- Call forwarding
- No dropped calls and excellent fidelity

UNIVERGE Assured Mobility™ is NEC's newest generation wireless LAN (WLAN) communications solution, connecting people to people and information—anytime, anywhere, on any device. The UNIVERGE Wireless Optimized Architecture™ (WOA) is the power behind Assured Mobility, bringing a new level of intelligence to your network and maximizing your mobility experience.

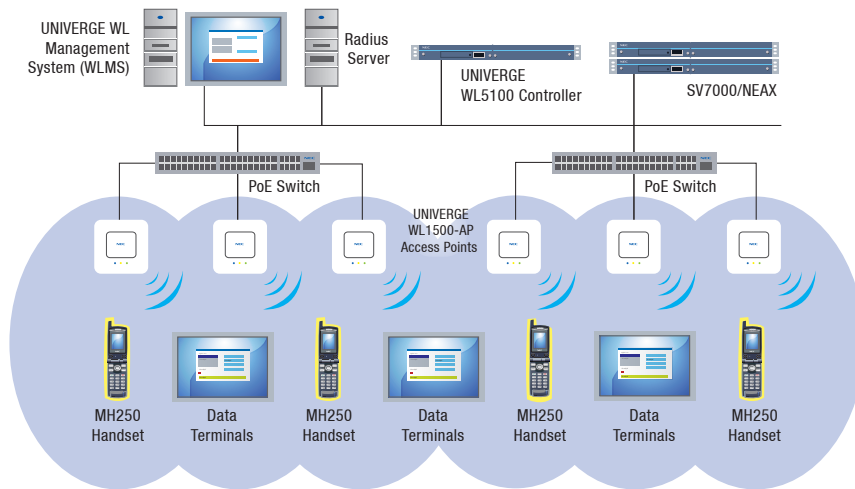
High-quality service

The WOA elevates mobility to a new level by giving voice packets the highest priority. The VoWLAN MH250 is designed to take advantage of WOA and provide high-quality voice service—no dropped calls and excellent fidelity everywhere in the building or on campus.

High-speed handover

Unlike current methods of handover where the decision is based on signal strength only, the WOA, in conjunction with the MH250 software, obtains a list of suitable AP(s) from the WLAN controller ensuring the best throughput from each AP. The handover is processed seamlessly.

UNIVERGE® VoWLAN MH250 In-building Telephone



Note: PC and VoWLAN phone mixed in single segment

Specifications

UNIVERGE VoWLAN MH250 In-building Telephone	
Wireless Interfaces	IEEE802.11b (RCR STD-33/ARIB STD-T66) + WLAN Extension
Voice Codec	G.711, G.729a, Payload Cycle: 20ms, 40ms
Control Protocols	SIP (RFC3261) + SIP Extension
Security (Authorization & Encryption)	Authentication: MAC auth, IEEE802.1x (EAP-TLS, MS-PEAP) Encryption: Static WEP (64/128), TKIP, AES
Protocols	UDP, HTTP, DHCP
Talk Time / Standby Time	180 Minutes / 85 Hours
Display	TFT 65536 2" Color LCD 176 x 220 Pixels
Language	English, Spanish, German, Dutch, Italian, Japanese
Main Features	Instant Message (Up to 100 entries 300 bytes), Phonebook (Up to 500 entries), Call History (Up to 30 entries), Speed Dial (Up to 10 entries)
Ringing Melody	Melody: 10 patterns, Sound: 20 patterns, 7 level tones
Battery	Lithium Ion
Environment	Temperature: 0°–40° C, Humidity: 20–90%
Dimensions (HxWxD)	98.0 x 47.6 x 28.2 mm
Weight	Approximately 110g (including battery)

Battery power-saving mode

When the MH250 is in stand-by mode, the phone receives signals intermittently, and sleeps while not receiving signals, in order to extend battery charge time. During a call, the phone sleeps when the phone receives no signals.



UNIVERGE360 is NEC's approach to unifying business communications. It places people at the center of communications and delivers on an organization's needs by uniting infrastructure, communications and business.

Empowered by Innovation

NEC

For more information, visit www.necunified.com

Corporate Headquarters (Japan)
NEC Corporation
www.nec.com

Oceania (Australia)
NEC Australia Pty Ltd
www.nec.com.au

North America (USA)
NEC Unified Solutions, Inc
www.necunifiedsolutions.com

Asia
NEC Corporation
www.nec.com

Europe (EMEA)
NEC Philips Unified Solutions
www.nec-philips.com

About NEC Unified Solutions, Inc. NEC Unified Solutions helps companies unify their business through innovative software, applications, development tools, and services. NEC offers a complete portfolio for unified communications, wireless, voice, data and managed services, as well as systems integration and application development. NEC Unified Solutions, a wholly owned subsidiary of NEC Corporation of America, serves Fortune 1000, as well as small to mid-sized businesses across the globe in vertical markets such as hospitality, education, government and healthcare. For more information, visit www.necunified.com.

188447 | v.02.12.08

© 2008 NEC Corporation. All rights reserved. NEC, NEC logo, and UNIVERGE are trademarks or registered trademarks of NEC Corporation that may be registered in Japan and other jurisdictions. All trademarks identified with ® or ™ are registered trademarks or trademarks respectively. Models may vary for each country. Please refer to your local NEC representatives for further details.